

# HIAB 260

**ADVANCED  
TECHNOLOGY**



## THE HIAB COMMITMENT

At HIAB, we are strongly committed to the highest standards . . . the standards that built our reputation as the best in the industry. Since the 1940's we have sold and serviced over 250,000 cranes Worldwide. Our Engineering and Manufacturing groups are continuously analyzing and evaluating HIAB's vast resources of user information.

The end result of this wealth of experience and know-how is a complex but finely tuned balance between capacity and boom length on one hand, and minimum weight and dimensions on the other . . . the two most important factors for maximum utilization of your crane and truck.

To get more performance out of your HIAB, we believe something more has to go into it. Every HIAB is the culmination of endless hours of research and development . . . substantiated by many hours of torture-testing. The finished product is a successful combination of advanced state-of-the-art technology, brute strength and uncompromising quality control. **THE BEST IN THE WORLD!** Most of our users put three to four trucks under their HIAB's.

It's what you would expect from HIAB . . . the originator and world's largest manufacturer of articulated cranes.

## THIS IS THE HIAB 260 . . .

**designed for the operator!** Four different boom versions: 20 ft., 27 ft., 33 ft. or 39½ ft., all hydraulic. The extensions and jibs will take you out to 60 ft., and vertical to 68 ft. As for capacity, you couldn't ask for more . . . 6600 lbs. at 26 ft. All this reach . . . all this capacity. . . and still the crane folds compactly behind the truck cab. Low weight and minimum space means maximum payload. Hydraulic outrigger extension 15 ft., optional to 19½ ft. . . . and the legs can be operated from either side so that you don't need to run around your truck to set them. A real time and labor saver!

The HIAB 40 valve is so smooth that you have to try it to believe it. The patented cross rod controls are the same sequence on both sides of the truck. Your operator learns more easily, unloads more quickly and safely. What a Crane!

## SAFETY . . .

**the name of the game.** We pioneered crane safety and we still do. The 40 valve . . . the special steel . . . hose failure valves . . .

double braid  
wire hose . . . selection  
of outrigger legs for  
proper stability . . . three point



suspension to protect your truck... same sequence controls on either side of the truck to avoid confusion... the list goes on and on... Ask for our Valve Brochure for even more safety features!

### ATTENTION TO DETAIL . . .

**a HIAB tradition.** We sandblast and prime all steel prior to production for an unmatched, long-lasting finish. We even hard-chrome plate our pins for long life.

Nothing is taken for granted in a HIAB. An oil tank is an oil tank? Not to us... we include a 15 micron return filter, anti-surge baffles, magnetic trap, sight

gauge, anti-condensation trap, filter breather, filler screen, etc.

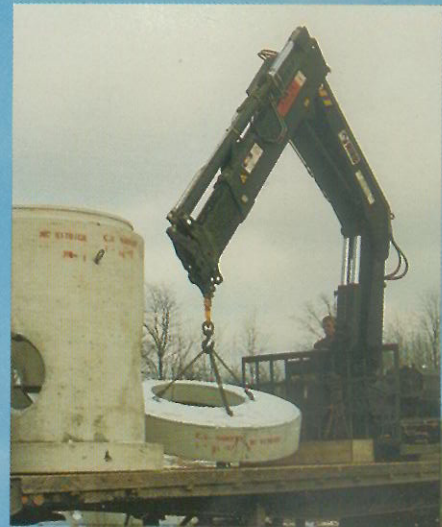
Quality is hard to see—only years of use will tell. We know because we still service 25 year-old cranes.

### RELIABLE PARTS AND SERVICE

We know it's important to you. It's equally important to us. Your crane must run day in and day out... in all kinds of weather. To make sure of this, we've reduced greasing intervals to one month with specially designed chrome pin and bushing arrangements in our boom system. We have boom guide pads that adjust from the outside... main column bushings that run in an oil bath... hoses routed for easy access... and first-class operator's and parts manuals.

As a result, we don't expect to see you often. However, when you do need us, you'll be supported across North America by a service organization second to none... factory-trained technicians... and a five million dollar spare parts stock.

**HIAB is reliability.** So much so that the resale value is the highest in the industry.



## THE HIAB 260 IN FIGURES

	HIAB 260A/B2	HIAB 260AW/B2	HIAB 260AWV/B2	HIAB 260AWW/B2
Hydraulic reach, standard	20'8"	27'3"	33'9"	39'8"
Reach with manual boom extension	53'2"	53'2"	52'10"	—
Reach/lifting capacity, standard	7'6"/22050 lbs.*	7'2"/22050 lbs.*	7'2"/22050 lbs.*	6'10"/22050 lbs.*
	14'9"/12120 lbs.	15'1"/11460 lbs.	15'9"/10360 lbs.	15'9"/9920 lbs.
	20'4"/8820 lbs.	21'/8150 lbs.	27'7"/5950 lbs.	27'7"/5730 lbs.
Reach/lifting capacity with manual boom extensions	26'11"/6500 lbs.	26'11"/6390 lbs.	33'5"/4850 lbs.	39'/4070 lbs.
	39'8"/4030 lbs.	40'/3940 lbs.	39'8"/3830 lbs.	—
	52'6"/2910 lbs.	52'6"/2860 lbs.	45'11"/3190 lbs.	—
Slewing angle	400°	400°	400°	400°
Weight, standard version with outrigger legs	6670 lbs.	6810 lbs.	7260 lbs.	7550 lbs.

\*With inner hook attachment only

- Specifications are subject to change without notice.
- Some items shown may be optional.
- For complete and current details, see our TECHNICAL DATA FOLDER.

### PRIDE OF OWNERSHIP

You'll always make the right choice with HIAB. We are one of the few crane manufacturers that really care about how long your crane lasts. We meet the toughest design standard in the world . . . the DIN 15018 B2/B3 . . . You buy this with every HIAB.

Your HIAB distributor is:



HIAB CRANES & LOADERS, INC.  
 Airport Industrial Park  
 258 Quigley Boulevard  
 New Castle, Delaware 19720  
 (302) 328-5100 Telex: 905-619